

ACUSON Origin Ultrasound System

Revolutionizing structural heart procedures

Expand your imaging boundaries
in structural heart imaging

Smart | Clear | Easy

siemens-healthineers.com/ultrasound



Revolutionizing structural heart procedures

Expand your imaging boundaries in structural heart imaging

Smart | Clear | Easy

Smart features with one click

ACUSON Origin by Siemens Healthineers. Our AI integration promises advancements in quantitative capabilities for consistent and reproducible measurements. ACUSON Origin is equipped with state-of-the-art imaging technology to meet the demands of the most challenging interventions and patient populations.

4D Heart^{AI} provides instant insights and real-time results for comprehensive cardiac profiling pre and post procedure:

- Offers dual-modality advancement with 4D Auto Contouring of both ventricular chambers in TEE
- Enables analysis for irregular heartbeats and the ability to edit frames, AVC, and Pre-A. The ability to quantify and average up to 5 beats. Plus, analysis without ECG (single beat).
- Attain 96% accuracy in detecting LV ED and ES volumes through 4D Heart^{AI}¹, ensuring precise clinical data acquisition

AI Measure allows one click instant Doppler analysis of one cardiac beat or multiple.

Clear unmatched imaging capabilities

The ACUSON Origin boasts unparalleled image quality with alternative imaging capabilities, setting a new standard in cardiac ultrasound.

AcuNav Lumos™ 4D ICE Catheter² – IntraCardiac Echocardiography for unsurpassed visualization and precise guidance:

- Enhanced MPR biplane and improved image quality in 2D, MPR, and 4D imaging
- Dedicated Bi-plane control on the ACUSON Origin for streamlined 4D workflow
- Introduction of 3D calipers and labeled markers for anatomical identification and precise measurements during procedures
- Enhanced Real-Time 4D color flow Doppler with industry-leading volume rates for advanced detail visualization
- Provide alternative imaging options for patients not suitable for TEE or moderate sedation



¹ Algorithm Study Report Unified Heart pg 23 & 24

² Under development. Not available for sale in the U.S.A. and the AcuNav Lumos mentioned herein are not commercially available in all countries. Their future availability cannot be guaranteed.



Easy workflow redefined

UltraArt provides real-time quad-display to allow users to select their image preference from a touch screen display. UltraArt reduces speckle and enhances contrast to provide a realistic tissue presentation and patient-specific processing that adapts to differences in tissue.

InFocus Imaging eliminates reliance on traditional focal zones, ensuring consistent sharpness across the entire image. Seamlessly encompasses the depth range from near to far field, setting a new industry benchmark. Outpaced competitors by 8 years in integrating this groundbreaking innovation first.

AutoFlash Artifact Suppression Technology effectively limits flashing and ghosting color artifacts due to motion without requiring user interaction. Restores conventional image processing when motion stops, ensuring clarity and precision.

Simplify your workflow with the ACUSON Origin's user-centric design, offering:

- Intuitive touch screen and controls positioned for effortless access
- Ergonomically designed console reducing repetitive motion, ensuring ease of use
- Customizable workflows to optimize efficiency for doctors, sonographers, and patients
- Lighter¹, smaller¹, and easily maneuverable, making the system highly adaptable

¹ Compared to ACUSON SC2000

Unleash the Power of Precision with ACUSON Origin

Experience the future with Siemens Healthineers' ACUSON Origin and AcuNav Lumos¹. Elevate your structural heart procedures with unparalleled clarity, precision, and efficiency. Don't settle for limitations – embrace the technology that pushes boundaries and empowers your practice to achieve exceptional patient outcomes.

Contact us today to learn more about how the ACUSON Origin can transform your approach to structural heart interventions.

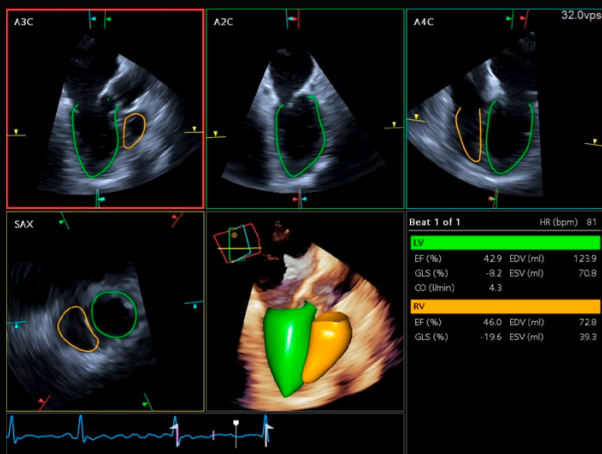


Spotlight: Structural Heart Image Guidance

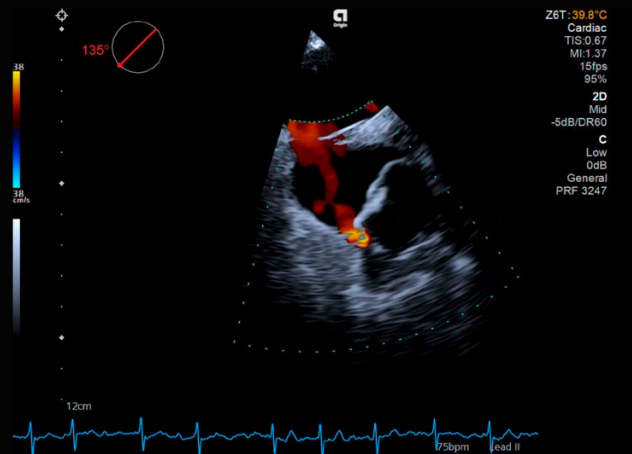
Siemens Healthineers has sold over 2 million catheters and 24 years of pioneering 2D and 4D ICE.

¹ Under development. Not available for sale in the U.S.A. and the AcuNav Lumos mentioned herein are not commercially available in all countries. Their future availability cannot be guaranteed.





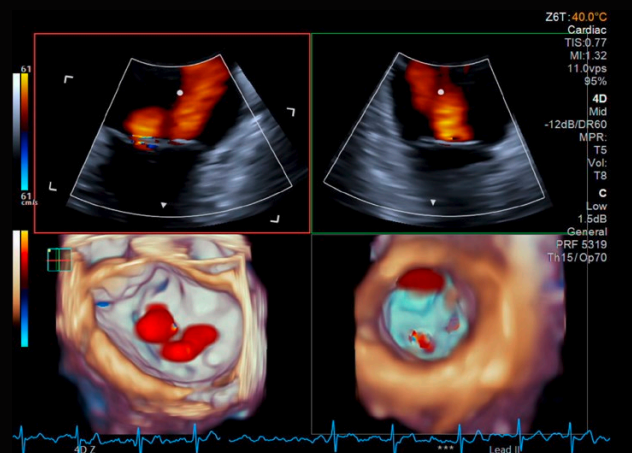
4D Heart^{AI}. Illustrating feature functionality to contour both ventricles simultaneously and dynamically at 32 VPS.



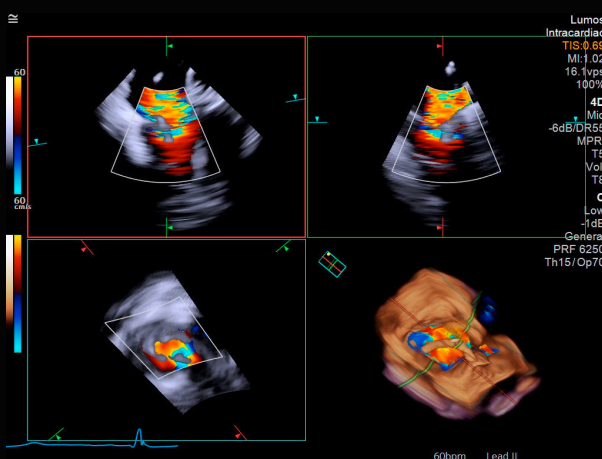
TEE imaging with color Doppler post Watchman placement follow-up, noting a para-device leak.



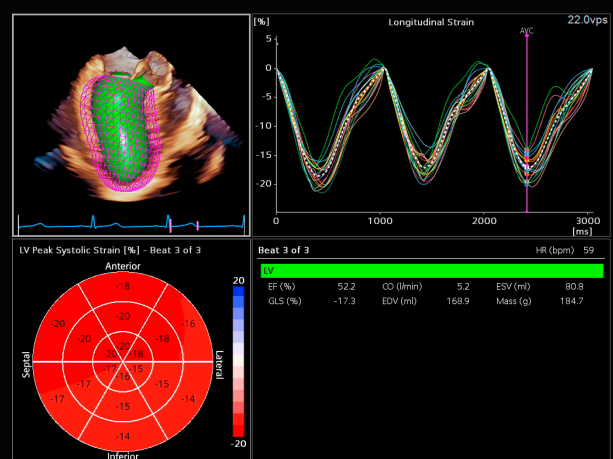
AcuNav Lumos 2D ICE imaging of the left atrial appendage. Note the image quality, definition and resolution.



4D TEE image illustrates the color definition and clarity in both the MPRs and the 4D imaging looking from the LA (left) and from the LV (right) with 4D color, noting 2 distinct jets.



AcuNav Lumos 4D ICE image demonstrating significant TR in MPRs as well as the realtime 4D color volume imaging at 16.1 VPS.



4D LV analysis illustrating 3-beat segmental longitudinal strain curves with Bull's-eye map, and 4D derived LV measurements at 22 VPS.

The information in this document contains general technical descriptions of specifications and options as well as standard and optional features, which do not always have to be present in individual cases.

Siemens Healthineers reserves the right to modify the design, packaging, specifications, and options described herein without prior notice. For the most current information, please contact your local sales representative from Siemens Healthineers.

Note: Any technical data contained in this document may vary within defined tolerances. Original images always lose a certain amount of detail when reproduced.

The products/features mentioned in this document may not be commercially available in all countries. Due to regulatory reasons their future availability cannot be guaranteed. Please contact your local Siemens Healthineers organization for further details. Standalone clinical images may have been cropped to better visualize pathology.

ACUSON Origin and AcuNav are trademarks of Siemens Medical Solutions, USA, Inc.

At Siemens Healthineers, we pioneer breakthroughs in healthcare. For everyone. Everywhere. Sustainably. As a leader in medical technology, we want to advance a world in which breakthroughs in healthcare create new possibilities with a minimal impact on our planet. By consistently bringing innovations to the market, we enable healthcare professionals to innovate personalized care, achieve operational excellence, and transform the system of care.

Our portfolio, spanning in vitro and in vivo diagnostics to image-guided therapy and cancer care, is crucial for clinical decision-making and treatment pathways. With the unique combination of our strengths in patient twinning¹, precision therapy, as well as digital, data, and artificial intelligence (AI), we are well positioned to take on the greatest challenges in healthcare. We will continue to build on these strengths to help overcome the world's most threatening diseases, enable efficient operations, and expand access to care.

We are a team of more than 71,000 Healthineers in over 70 countries passionately pushing the boundaries of what is possible in healthcare to help improve the lives of people around the world.

¹ Personalization of diagnosis, therapy selection and monitoring, after care and managing health.

Siemens Healthineers Headquarters

Siemens Healthineers AG
Siemensstr. 3
91301 Forchheim, Germany
Phone: +49 9191 18-0
siemens-healthineers.com

Manufacturer

Siemens Medical Solutions USA, Inc.
Ultrasound
22010 S.E. 51st Street
Issaquah, WA 98029, USA
Phone: 1-888-826-9702
siemens-healthineers.com/ultrasound