

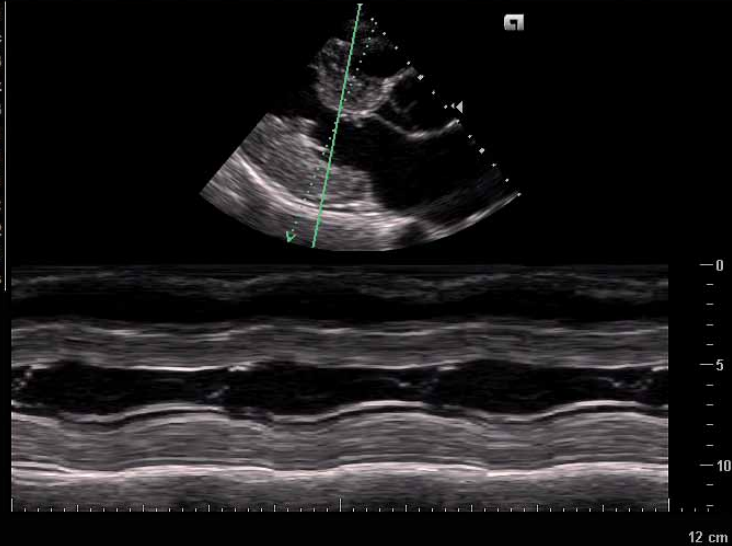
SIEMENS

CH5-2  
Abdomen  
1 dB  
2.7 MHz  
1563 Hz  
Filter 1  
Persist 2  
R/S 4  
Map C  
Priority 4  
Smooth 2  
Flow M  
6 fps



SIEMENS

P5-1  
Cardiac  
23 dB  
THI 1.8 MHz  
DR 60 dB  
Edge 1  
Persist 1  
R/S 1  
Map C  
Tint 2  
DTO 1  
76 fps



SIEMENS

CH5-2  
Abdomen  
30 dB  
THI F 2.2 MHz  
DR 60 dB  
Edge 2  
Persist 4  
R/S 4  
Map C  
Tint 3  
4 fps



### Dual Imaging and Power Doppler

Enables side-by-side comparison of 2D and power Doppler mode, clearly confirming renal artery origins.

### Anatomical M-mode

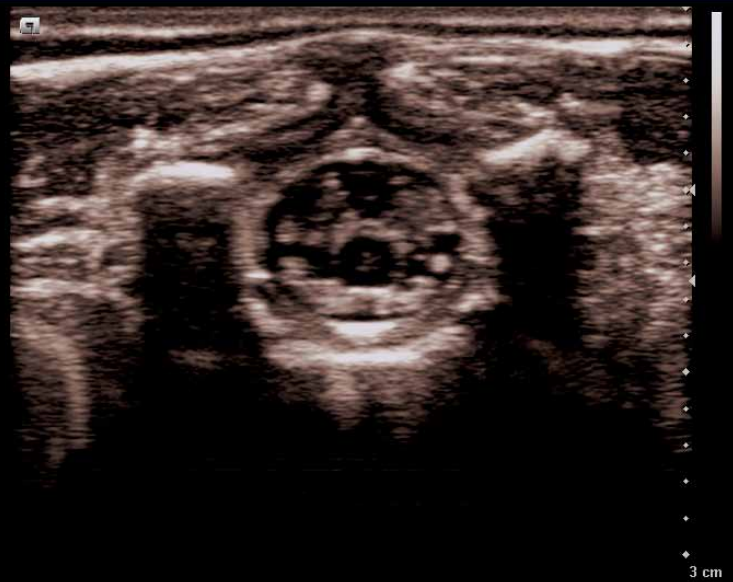
Allows for acquisition of anatomically accurate M-mode by allowing angle correction.

### Tissue Harmonic Imaging

Improves contrast resolution and enhances the differentiation between the liver parenchyma and this hemangioma.

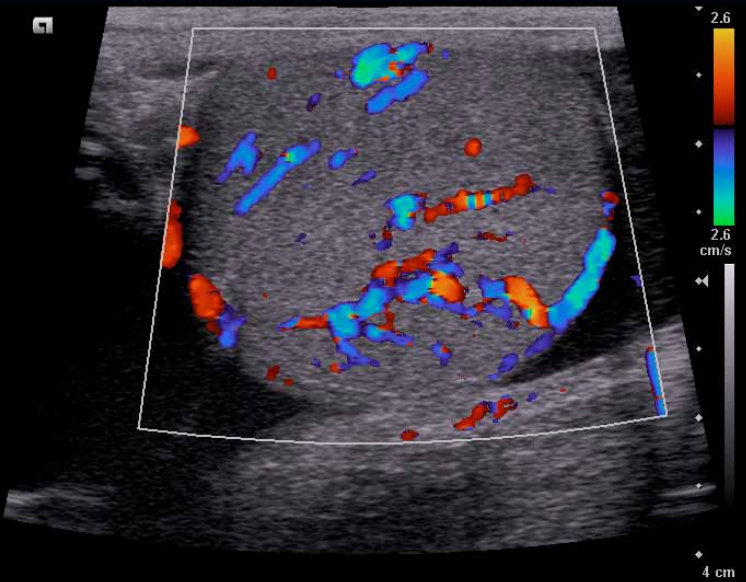
SIEMENS

VF13-5  
MSK  
30 dB  
THI 4.4 MHz  
DR 60 dB  
Edge 2  
Persist 3  
R/S 4  
Map I  
Tint 7  
SieClear 3  
DTCE Med  
10 fps



SIEMENS

VF13-5+  
Testicle  
4 dB  
7.3 MHz  
488 Hz  
Filter 1  
Persist 3  
R/S 4  
Map A  
Priority 4  
Smooth 2  
Flow M  
5 fps



SIEMENS

C7F2  
OB  
25 dB  
Opacity  
Opacity 65  
DR 60  
Contrast 56  
Brightness 44  
Smooth 40  
LowTh 50  
Map A  
Tint 12  
2.0 vps



**Dynamic TCE™ Tissue Contrast Enhancement Technology and SieClear™ Multi-view Spatial Compounding**  
Enhances tissue contrast resolution, reduces speckle and improves border definition, clearly demonstrating in the spinal cord in a neonate.

**Color Doppler Imaging**  
Demonstrates excellent color sensitivity by identifying small, low flow vessels within this testicle with associated hydrocele.

**Advanced fourSight™ 4D Imaging Technology**  
Provides exceptional detail resolution as seen in this 3D volume rendering of a fetal face.