

ACUSON X700 Ultrasound System

Cardiology



Excellent image quality, new design innovations and advanced technologies on the ACUSON X700™ ultrasound system deliver outstanding performance for cardiology. The ACUSON X700 system leverages technologies migrated from our premium platforms to quickly process complex information for detailed assessment of cardiac anatomy and physiology.

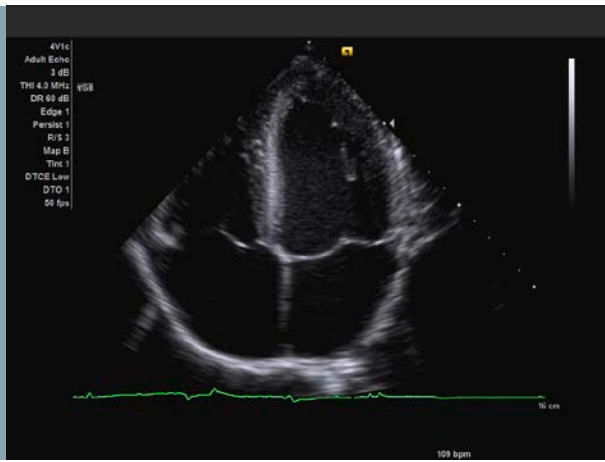
Exceptional system reliability, future functionality and upgradability protect customer investment.

*At the time of publication, the U.S. Food and Drug Administration has cleared ultrasound contrast agents only for use in LVO. Check current regulations for the country in which you are using this system for contrast agent clearance.

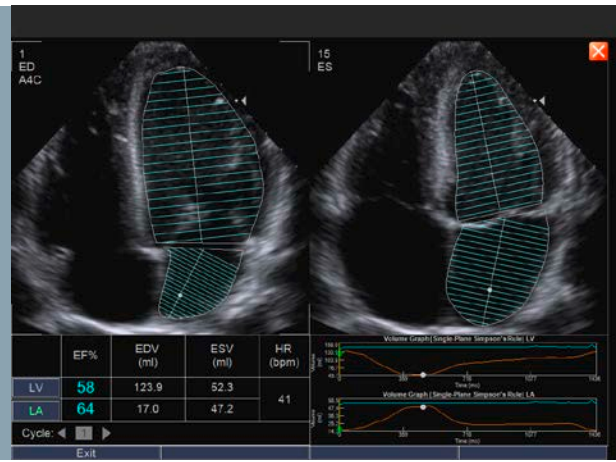
Highlights

- **Dynamic TCE™ Tissue Contrast Enhancement Technology:**
Enhances tissue contrast resolution through speckle reduction using a proprietary advanced processing algorithm.
- **syngo® Velocity Vector Imaging™ (VVI) Technology:**
Visualizes, measures and displays global and regional myocardial motion and mechanics using a 2D image and sophisticated tracking algorithm.
- **syngo® Auto Left Heart (Auto LH):**
Automatically identifies ED and ES frames and tracks endocardial borders frame to frame. Uses pattern recognition technology based on a comprehensive database representing typical transthoracic exams.
- **Axiu™ Edge Assisted Ejection Fraction:**
Calculates left ventricular volume and ejection fraction quickly and reliably.
- **syngo® fourSight™ TEE View:**
Provides acquisition, review, manipulation and dynamic display capabilities of gated 3D data sets using the V5M transesophageal transducer.
- **syngo® Mitral Valve Assessment (MVA):**
Enables detailed assessment of mitral valve morphology from 3D images. Utilizes an integrated method in conjunction with syngo fourSight TEE View.
- **Cadence™ Contrast Agent Imaging Technology*:**
Provides excellent detection of the response from contrast agent microbubbles, coupled with a high-resolution display.

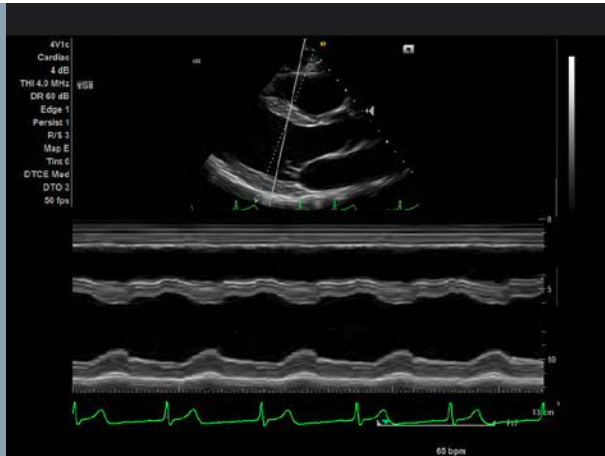
Answers for life.



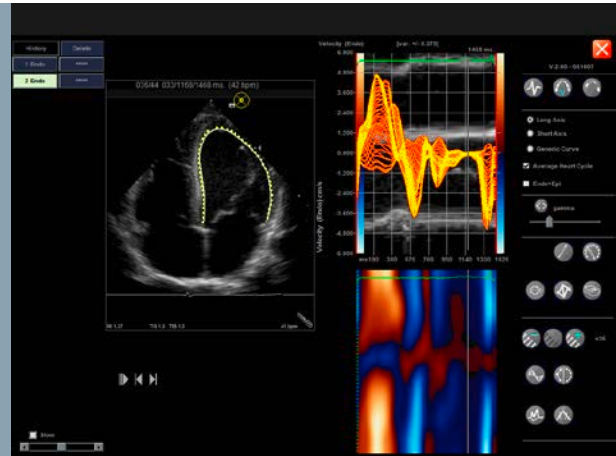
Dynamic TCE Tissue Contrast Enhancement Technology (DTCE)
Clearly delineates valve detail and myocardium.



syngo Auto Left Heart (Auto LH)
Provides accurate, reproducible assessment of left heart function.



Anatomical M-mode
Provides off axis alignment for accurate M-mode measurements.



syngo Velocity Vector Imaging Technology
Displays rotation, strain and strain rate calculations of myocardial mechanics.

Standalone clinical images may have been cropped to better visualize pathology.

ACUSON X700, Axius, Cadence, Dynamic TCE, *fourSight* and Velocity Vector Imaging are trademarks of Siemens Medical Solutions USA, Inc. and *syngo* is a trademark of Siemens AG.

Order No. A91US-254-1C-4A00 | Printed in Germany | CC 1312 0513X. | © 05.2013, Siemens Medical Solutions USA, Inc.

Global Siemens Headquarters

Siemens AG
Wittelsbacherplatz 2
80333 Muenchen
Germany

Global Siemens Healthcare Headquarters

Siemens AG
Healthcare Sector
Henkestr. 127
91052 Erlangen
Germany
Phone: +49 9131 84-0

Legal Manufacturer

Siemens Medical Solutions USA, Inc.
Ultrasound
685 E. Middlefield Road
Mountain View, CA 94043 USA
Phone: +1-888-826-9702