

SIEMENS



Transducers

ACUSON SC2000™ Ultrasound System

Precision at the Speed of Life | Release 5.0

Table of Contents

Z6Ms Transducer	3
4Z1c Transducer	3
4V1c Transducer	4
8V3 Transducer	4
10V4 Transducer	5
V5Ms Transducer	5
V7M Transducer	6
9L4 Transducer	6
6C1 HD Transducer	7
Aux CW	7
AcuNav 8F	8
AcuNav 10F	8
AcuNav V	9
SoundStar 10F	9



Z6Ms Transducer

Frequency Bandwidth:	3.0 – 6.3 MHz
Compatible With:	ACUSON SC2000™ Ultrasound System
Exam Types:	Transesophageal Echo

Design Attributes:

- Matrix array with active electronics for transesophageal real-time full volume imaging
- Supports bi-plane, 2D, color Doppler (CDV, DTV), spectral Doppler (PW, PW DTI, CW), M-mode, color M-mode, and full volume imaging in B-mode and color Doppler
- Endoscope diameter = 10.2 mm, length = 100 cm
- Tip size: width = 15.5 mm, height = 12 mm, circumference = 49.8 mm
- Ergonomic design with one hand control and programmable buttons



4Z1c Transducer

Frequency Bandwidth:	1.5 – 3.5 MHz
Applications:	Transthoracic Adult Echo, Volume Stress Echo, Contrast Agent Studies

Design Attributes:

- Matrix array with active electronics designed for transthoracic adult full volume echocardiography
- Supports volume imaging, 2D, color Doppler (CDV, DTV, DTE), spectral Doppler (PW, DTI) and alternate line phased contrast agent imaging*
- Patented active cooling
 - The 4Z1c transducer features a revolutionary, patented active cooling technology. Active cooling enables the 4Z1c transducer to image with full output power within regulatory limits, resulting in improved penetration, reduced noise and high volume acquisition rates when compared to conventional 3D transducers
- Patented ergonomic design
 - Elastogrip™ ergonomic grip coating and palmar shape reduce operator fatigue

* At the time of publication, the U.S. Food and Drug Administration has cleared ultrasound contrast agents only for use in LVO. Check the current regulations for the country in which you are using this system for contrast agent clearance.



4V1c Transducer

Frequency Bandwidth:	1.25 – 4.5 MHz
Compatible with:	ACUSON S3000™ ultrasound system ACUSON S2000™ ultrasound system ACUSON S1000™ ultrasound system ACUSON Sequoia™ ultrasound system ACUSON X700™ ultrasound system
Applications:	Transthoracic Adult Echo, Pediatric Echo, 2D Stress Echo, Contrast Agent Studies

Design Attributes:

- The 4V1c transthoracic transducer utilizes Hanafy lens transducer technology to provide excellent elevation focusing and uniform beam intensity throughout the field of view
- Supports IN Focus Coherent Imaging technology, a new standard in information imaging to deliver full field of view in focus without user intervention, resulting in excellent detail and contrast resolution at all depths
- Supports 2D, color Doppler (CDV, DTV, DTE), spectral Doppler (PW, CW, DTI) and contrast agent imaging*

* At the time of publication, the U.S. Food and Drug Administration has cleared ultrasound contrast agents only for use in LVO. Check the current regulations for the country in which you are using this system for contrast agent clearance.



8V3 Transducer

Frequency Bandwidth:	3.0 – 8.0 MHz
Compatible with:	ACUSON S3000 ultrasound system ACUSON S2000 ultrasound system ACUSON S1000 ultrasound system ACUSON Sequoia ultrasound system
Applications:	Fetal Echo, Neonatal Echo, Pediatric Echo

Design Attributes:

- Hanafy lens transducer technology
- Vector™ wide-view imaging format
- User-selectable MultiHertz™ multiple frequency imaging

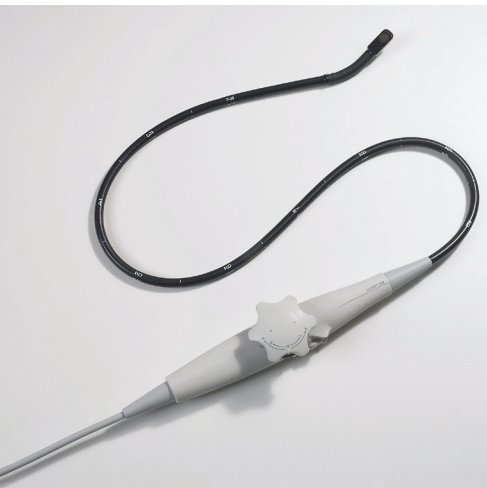


10V4 Transducer

Frequency Bandwidth:	4.0 – 10.0 MHz
Compatible with:	ACUSON SC2000 ultrasound system, Release 3.0 and later ACUSON S3000 ultrasound system ACUSON S2000 ultrasound system ACUSON S1000 ultrasound system ACUSON Sequoia ultrasound system
Exam Types:	Neonatal Echo, Pediatric Echo

Design Attributes:

- Vector imaging format
- User-selectable MultiHertz Imaging



V5Ms Transducer

Frequency Bandwidth:	3.0 – 7.0 MHz
Compatible with:	ACUSON S3000 ultrasound system ACUSON S2000 ultrasound system ACUSON S1000 ultrasound system ACUSON X700 ultrasound system ACUSON X300™ ultrasound system PE ACUSON Sequoia ultrasound system
Applications:	Transeosophageal Echo

Design Attributes:

- Endoscope diameter = 10.5 mm, length = 110 cm
- Adult tip size: width = 14.5 mm, height = 11.5 mm
- Ergonomic design featuring one-hand control with variable speed rotation: 90° per sec
- RF shielding
- User-selectable MultiHertz imaging



V7M Transducer

Frequency Bandwidth:	4.0 – 8.0 MHz
Compatible with:	ACUSON SC2000 ultrasound system, Release 3.0 and later ACUSON S3000 ultrasound system ACUSON S2000 ultrasound system ACUSON S1000 ultrasound system ACUSON Sequoia ultrasound system
Exam Types:	Pediatric and adult transesophageal echo

Design Attributes:

- Endoscope diameter = 7.0 mm; length = 70 cm
- Small tip size for increased patient comfort: width = 10.9 mm, thickness = 8.0 mm, circumference = 22 mm
- Ergonomic design featuring one-hand control
- Manual rotation: -10° – 190°
- Vector Imaging format phased array
- User-selectable MultiHertz Imaging



9L4 Transducer

Frequency Bandwidth:	4.0 – 9.0 MHz
Compatible with:	ACUSON S3000 ultrasound system ACUSON S2000 ultrasound system ACUSON S1000 ultrasound system ACUSON Sequoia ultrasound system
Applications:	Carotid, Peripheral Vascular Arterial, Peripheral Vascular Venous

Design Attributes:

- Multi-D matrix transducer
- Ergonomically designed form factor
- Lightweight transducer with flexible cable
- User-selectable MultiHertz multiple frequency imaging
- Harmonic compounding



6C1 Transducer

Frequency Bandwidth:	1.5 – 6.0 MHz
Compatible with:	ACUSON SC2000 ultrasound system, Release 3.5 and later ACUSON S3000 ultrasound system ACUSON S2000 ultrasound system ACUSON S1000 ultrasound system
Exam Types:	Abdomen

Design Attributes:

- Curved Vector imaging format
- Hanafy lens transducer technology
- User-selectable MultiHertz imaging
- Ergonomic design with ElastoGrip ergonomic grip coating



Aux CW

Selectable CW Doppler Frequency:	2 MHz
Compatible with:	ACUSON S3000 ultrasound system ACUSON S2000 ultrasound system ACUSON S1000 ultrasound system ACUSON X700 ultrasound system ACUSON X300 ultrasound system



AcuNav 8F*

Frequency Bandwidth:	5.0 – 10.0 MHz
Compatible with:	ACUSON SC2000 ultrasound system, Release 2.0 and later ACUSON S3000 ultrasound system ACUSON S2000 ultrasound system ACUSON S1000 ultrasound system ACUSON X300™ ultrasound system, premium edition ACUSON CV70™ cardiovascular system ACUSON Cypress™ cardiovascular system ACUSON P50™ ultrasound system ACUSON Sequoia™ C512 echocardiography system ACUSON Sequoia™ C256 echocardiography system ACUSON X700™ ultrasound system
Applications:	Adult Intracardiac Echocardiography, Pediatric Intracardiac Echocardiography

Design Attributes:

- 8 French catheter (2.7 mm diameter)
- 90 cm insertable length
- Sterile, single-use advanced miniaturization ACUSON AcuNav™ ultrasound catheter family
- Reusable SwiftLink™ catheter connector
- Four-way steering in two planes: 160° in each direction
- Longitudinal side-fire imaging
- Vector imaging format

* For purchase or inquires, contact Biosense Webster: USA (+1-909-839-8500 and +1-800-729-9010), Belgium +32-2-352-1411, Asia Pacific +(65) 6827-6100.



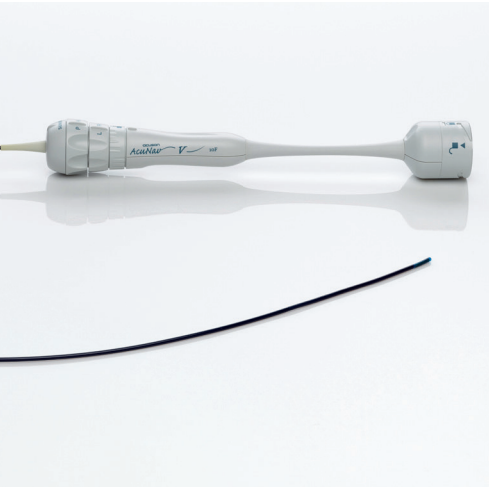
AcuNav 10F*

Frequency Bandwidth:	5.0 – 10.0 MHz
Compatible with:	ACUSON SC2000 ultrasound system, Release 2.0 and later ACUSON S3000 ultrasound system ACUSON S2000 ultrasound system ACUSON X300 ultrasound system, premium edition ACUSON CV70 cardiovascular system ACUSON Cypress cardiovascular system ACUSON P50 ultrasound system ACUSON Sequoia C512 echocardiography system ACUSON Sequoia C256 echocardiography system ACUSON X700 ultrasound system
Applications:	Adult Intracardiac Echocardiography, Pediatric Intracardiac Echocardiography

Design Attributes:

- 10 French catheter (3.3 mm diameter)
- 90 cm insertable length
- Sterile, single-use advanced miniaturization ACUSON AcuNav ultrasound catheter family
- Reusable SwiftLink catheter connector
- Four-way steering in two planes: 160° in each direction
- Longitudinal side-fire imaging
- Vector imaging format
- DTI capability

* For purchase or inquires, contact Biosense Webster: USA (+1-909-839-8500 and +1-800-729-9010), Belgium +32-2-352-1411, Asia Pacific +(65) 6827-6100.



AcuNav V

Frequency Bandwidth:	5.0 – 10.0 MHz
Applications:	Adult Intracardiac Echocardiography, Pediatric Intracardiac Echocardiography

Design Attributes:

- 10 French catheter (3.3 mm diameter)
- 90 cm insertable length
- Sterile, single-use advanced miniaturization ACUSON AcuNav ultrasound catheter family
- Reusable Swiftlink V catheter connector
- Four-way steering in two planes: 160° in each direction
- Longitudinal side-fire imaging
- Vector imaging format
- DTI capability



SoundStar 10F*

Frequency Bandwidth:	4.0 – 10.0 MHz
Compatible with:	ACUSON X700 ultrasound system ACUSON X300 ultrasound system, premium edition ACUSON Sequoia C512 echocardiography system ACUSON Sequoia C256 echocardiography system
Applications:	Intracardiac Echocardiography

Design Attributes:

- 10 French catheter (3.3 mm diameter)
- 90 cm insertable length
- Sterile, single-use advanced miniaturization ACUSON AcuNav ultrasound catheter family
- Reusable Swiftlink catheter connector
- Four-way steering in two planes: 160° in each direction
- Longitudinal side-fire imaging
- Supported by CARTO 3 Mapping System from Biosense Webster

* For purchase or inquires, contact Biosense Webster: USA (+1-909-839-8500 and +1-800-729-9010), Belgium +32-2-352-1411, Asia Pacific +(65) 6827-6100.

Frequency Bandwidth measurements represent bandwidth at ± 20 dB.

The products/features mentioned in this document may not be commercially available in all countries. Due to regulatory reasons their future availability cannot be guaranteed. Please contact your local Siemens organization for further details.

AcuNav, ACUSON, ACUSON P50, ACUSON S1000, ACUSON S2000, ACUSON S3000, ACUSON SC2000, ACUSON X300, ACUSON X700, CV70, Cypress, DTI, Elastogrip, Multi-D, MultiHertz, Sequoia, SwiftLink and Vector are trademarks of Siemens Medical Solutions USA, Inc.

Siemens Healthineers Headquarters

Siemens Healthcare GmbH
Henkestr. 127
91052 Erlangen
Germany
Phone: +49 9131 84-0
siemens.com/healthineers

Legal Manufacturer

Siemens Medical Solutions USA, Inc.
Ultrasound
685 East Middlefield Road
Mountain View, CA 94043
USA
Phone: +1-888-826-9702
siemens.com/ultrasound